

# Dessert *platters*



Our medium trays serve 6-8 people and large trays serve 10-12 people

## Tiramisu

Medium	Large
\$50	\$90

## Rice Pudding

Medium	Large
\$30	\$50

## Assorted Cheese Cake Slices

(Assorted flavours available)

\$2.99 each

## Cannoli

\$1.49 each

## Specialty Cakes

(6" approximately 700g)

\$15.99 each

(Chocolate Decedent, Vanilla Mascarpone, Wild Berry Or Caramel chocolate)

We require at least 48 hours notice. We will honour the price in effect on the date you placed your order. Prices do not include sales tax. Taxes are extra.

**Delivery available.\***

**Catering staff available for events.\***

\*Additional cost

# Lady York

Foods

[www.ladyyorkfoods.com](http://www.ladyyorkfoods.com)  
Your neighbourhood grocer.

DUFFERIN ST.	HWY 401
	LAWRENCE AVE.
	GLENBROOK AVE.
	GLENCAIRN AVE.

2939 Dufferin Street,  
Toronto, Ontario  
Tel: 416-781-8585

Hours of Operation:  
Mon - Fri: 8am - 9pm  
Sat: 8am - 6pm  
Sun: 8am - 6pm



  
**LADY YORK**  
CATERING



• sandwiches • hot plates • fruit & vegetables • salads • pasta • deli & cheese • much more!

ALWAYS  
*Fresh!*

[www.ladyyorkfoods.com](http://www.ladyyorkfoods.com)



# Lady York Foods

## hot table

Our medium trays serve 6-8 people  
and large trays serve 10-12 people

### Veal Cutlets in Sauce

\$5.99 each

### Classic Meat Loaf

Medium | Large  
\$45 | \$80

### Eggplant Parmigiana

Medium | Large  
\$50 | \$90



### Arancini

Meat or cheese  
\$2.99 each

### BBQ Whole Chicken

\$10.99 each

### Chicken Wings

BBQ, Hot, Honey Garlic,  
Salt/Pepper  
\$10.99 / lb.



### Lasagne

Meat, Cheese, Vegetarian or Gluten Free

Medium | Large  
\$55 | \$100

### Shephards Pie

Medium | Large  
\$40 | \$80

### Chicken Cutlets

\$5.99 each

### Parisian Potatoes

Medium | Large  
\$40 | \$80

### Pasta

Tomato or White Sauce

Medium | Large  
\$40 | \$70

Bolognese Sauce

Medium | Large  
\$45 | \$80

(Assorted Pasta Available)



### Meatballs Marinara

\$6.99 / lb.

### Herb Roasted Salmon

\$13.99 / lb.

### Breaded Baked Basa

\$10.99 / lb.

### Stir Fry Shrimp

\$14.99 / lb.



### Seasonal Grilled Vegetables

Medium | Large  
\$45 | \$80

### Pizza (18")

Margarita, Vegetarian,  
Chicken, Pepperoni, Potato  
\$22.99 each

### Rice

White Rice with Vegetables  
or Turmeric Rice

Medium | Large  
\$35 | \$60

Garlic & Soy Fried Rice

Medium | Large  
\$40 | \$65



## Deli platter

Olives or  
marinated  
vegetables  
placed in  
centre of tray



**Small (4 meats)**  
**\$65**

(serves 15 – 20 people)  
Prosciutto, Mortadella,  
Sopressa Veneto Salami  
and Turkey

**Large (6 meats)**  
**\$100**

(serves 25 – 35 people)  
Prosciutto, Mortadella,  
Sopressa Veneto Salami, Turkey,  
BBQ Chicken and Porchetta

*\*Prices will vary according to special request items*

## Cheese platter



**Small**  
**\$65**

(serves 15 – 20 people)  
Cheddar, Havarti,  
Provolone, Swiss and  
Parmigiano Reggiano

**Large**  
**\$95**

(serves 25 – 35 people)  
Cheddar, Havarti, Provolone,  
Swiss, Parmigiano Reggiano  
and Crotenese

*\*Prices will vary according to special request items. All cheeses are cubed.*

## Fruit platter

Strawberries,  
cantaloupes,  
pineapple,  
honeydew  
melons and  
grapes  
with chocolate  
dip placed in  
centre of tray



**Small**  
**\$35**

(serves 15 – 20 people)

**Large**  
**\$60**

(serves 25 – 30 people)

*\*Prices will vary according to special request. Some items are seasonal or unavailable.*

## Fruit Skewer platter

Strawberries, pineapple,  
honeydew melons  
and grapes

**\$2**  
per skewer

## Cookie platter

Orange, hazelnut, chocolate,  
pistachio, and almond.

**Small**  
**\$35**  
Approximately  
25-30 cookies

**Large**  
**\$65**  
Approximately  
50-55 cookies

## Lady York Pastry platter

Croissants, danishes,  
apple turnovers,  
cinnamon rolls and  
raspberry pastry

**\$35**  
Serves 10-15 people

# Veggie platter

Celery, peppers, carrots, broccoli and cauliflower with ranch dip placed in centre of tray



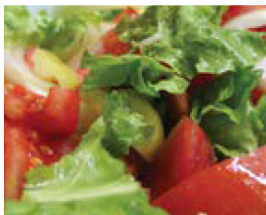
<b>Small</b> \$25 (serves 15 – 20 people)	<b>Large</b> \$50 (serves 25 – 30 people)
---	---

*\*Prices will vary according to special request.*

# Garden Salad *tray*

mixed greens with balsamic dressing

<b>Medium</b> \$30 (serves 10 – 15 people)	<b>Large</b> \$60 (serves 20 – 25 people)
--	---



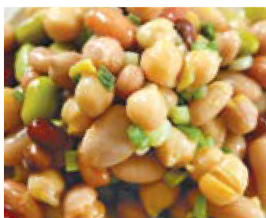
# Pasta Salad *tray*

<b>Medium</b> \$40 (serves 10 – 15 people)	<b>Large</b> \$70 (serves 20 – 25 people)
--	---



# Bean Salad *tray*

<b>Medium</b> \$45 (serves 10 – 15 people)	<b>Large</b> \$70 (serves 20 – 25 people)
--	---



# Sandwich platter

Your choice of standard cold cuts, egg salad or tuna salad



<b>Small</b> \$35 Approximately 20 pieces	<b>Large</b> \$70 Approximately 40 pieces
---	---

*\*Prices will vary according to special request.*

# Wrap platter

Your choice of standard cold cuts, egg salad, tuna salad or grilled vegetables



<b>Small</b> \$35 Approximately 20 pieces	<b>Large</b> \$70 Approximately 40 pieces
---	---

*\*Prices will vary according to special request.*